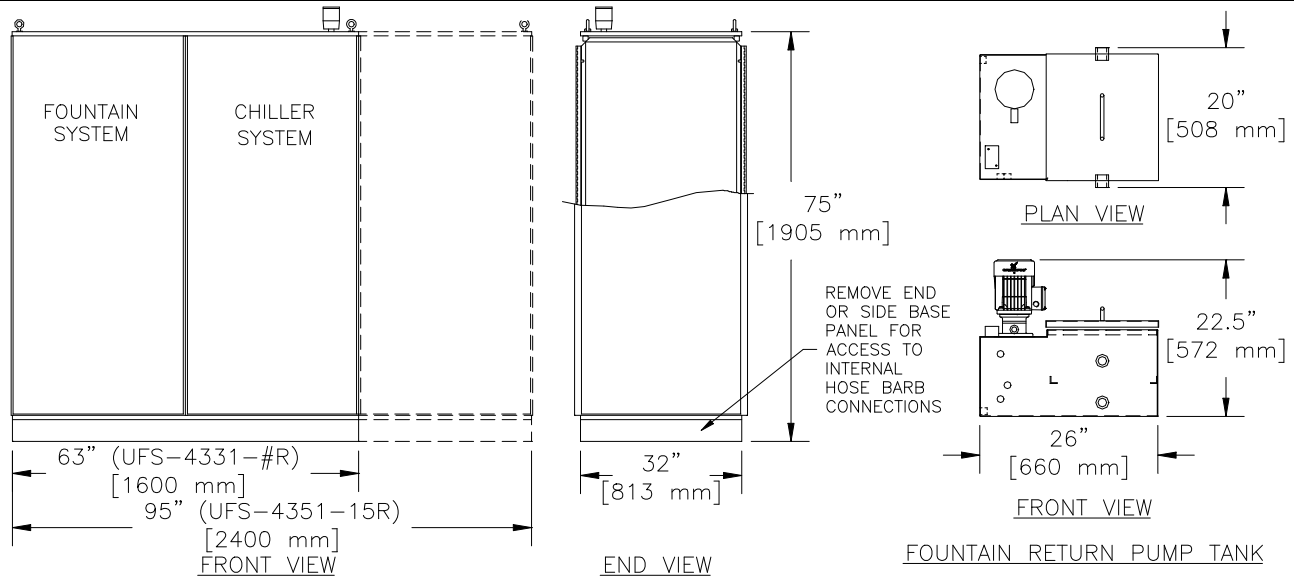




Sheetfed UniFlow 4000 Series

UFS-4331-5R, 7.5R, 10R & UFS-4351-15R

Design and Component Specifications, 460V



Model #	Total Cooling Tons	Fountain Cooling Tons	Fountain Supply Pump HP	Fountain Return Pump HP	Zone Supply Pump HP	Makeup Water GPM @ 20-60 PSI (1.4-4.1 bar)	FLA @ 460/3/60	Shipping Weight Lbs.
UFS-4331-5R	5 (1.4 kW)	3 (0.85 kW)	1 (0.75 kW)	0.5 (0.37 kW)	3 (2.2 kW)	5 (19 lpm)	31.5	4300 (1950 kg)
UFS-4331-7.5R	7.5 (2.1 kW)	3 (0.85 kW)	1 (0.75 kW)	0.5 (0.37 kW)	3 (2.2 kW)	5 (19 lpm)	36.9	4500 (2041 kg)
UFS-4331-10R	10 (2.8 kW)	3 (0.85 kW)	1 (0.75 kW)	0.5 (0.37 kW)	3 (2.2 kW)	5 (19 lpm)	39.0	4500 (2041 kg)
UFS-4351-15R	15 (4.3 kW)	3 (0.85 kW)	1 (0.75 kW)	0.5 (0.37 kW)	5 (3.7 kW)	5 (19 lpm)	47.0	4800 (2177 kg)

Cooling tons based on 55°F leaving fountain solution with 95°F ambient air.

Mechanical Features

- Single refrigeration circuit with scroll compressor
- Outdoor air-cooled remote condenser with low ambient controls
- Closed-loop chiller piping with expansion tank
- Cast iron zone supply pump for vibrator cooling
- Zone modulating temperature control valve
- 3-tons of fountain chiller cooling
- Stainless steel fountain supply pump
- Stainless steel insulated fountain tank
- Dual stage filtration in fountain tank: 15-micron bag, 10-micron filter sheet
- Dual additive metering
- Remote fountain return tank with filtration and pump
- Conductivity monitoring

Electrical Features

- Siemens PLC with touch pad operator interface
- Instrumentation diagnostics displayed on touch pad
 - Refrigeration circuit temperatures, pressures, and alarms
 - Fountain system temperature, conductivity, and alarms
 - Vibrator cooling water temperatures and alarms

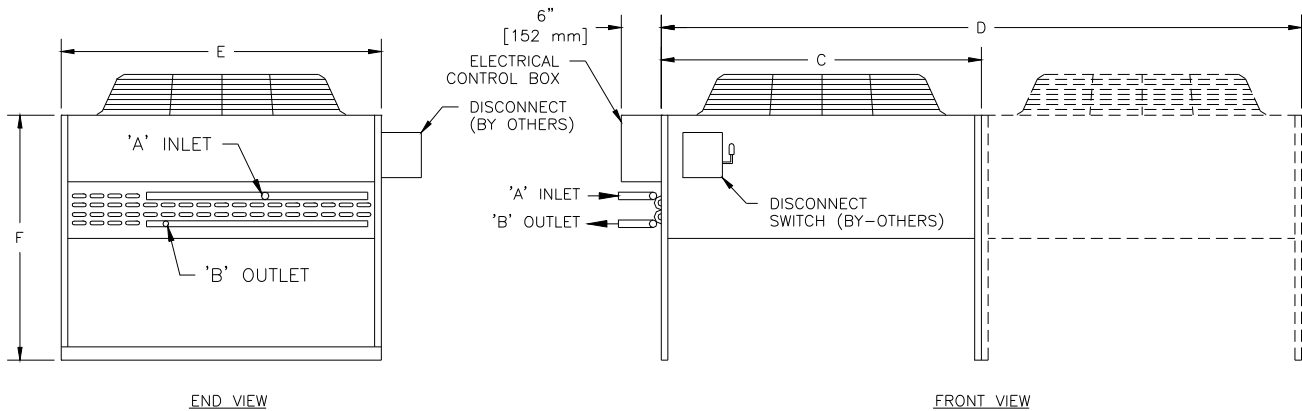
Warranty

One (1) year parts and labor, excluding expenses

Connection Sizes

- Makeup (city) water: 0.75" Hose Barb
- Fountain Supply & Return: 1" Hose Barb
- Zone Supply & Return: 1.5" Hose Barb
- Discharge Line:
 - 7/8" OD Sweat (5, 7.5, 10-ton units)
 - 1-1/8" OD Sweat (15-ton units)
- Liquid Line:
 - 5/8" OD Sweat (5, 7.5, 10-ton units)
 - 1-1/8" OD Sweat (15-ton units)

Note: Permanent city water connection necessary for fountain makeup and zone loop pressurization. Customer to supply city water to point of connection per local codes (backflow preventer installed by licensed plumber may be required).



END VIEW

FRONT VIEW

Model #	'A' Inlet	'B' Outlet	'C'	'D'	'E'	'F'	FLA @ 460/3/60	Shipping Weight Lbs.
UFS-4331-5R	1-1/8" OD SWT.	7/8" OD SWT.	41.25" (1048 mm)	-	48" (1219 mm)	42.75" (1086 mm)	2.3	220 (100 kg)
UFS-4331-7.5R	1-1/8" OD SWT.	7/8" OD SWT.	41.25" (1048 mm)	-	48" (1219 mm)	42.75" (1086 mm)	2.3	295 (134 kg)
UFS-4331-10R	1-1/8" OD SWT.	7/8" OD SWT.	-	71.25" (1810 mm)	48" (1219 mm)	42.75" (1086 mm)	4.4	340 (154 kg)
UFS-4351-15R	1-5/8" OD SWT.	7/8" OD SWT.	-	71.25" (1810 mm)	48" (1219 mm)	42.75" (1086 mm)	4.4	370 (168 kg)

Condenser power comes from UFS-4000 cabinet. Use condenser FLA for sizing local disconnect.



AWS, a Thermal Care Division
 7720 North Lehigh Avenue
 Niles, Illinois 60714-3491
 Tel: (847) 929-1950
 Toll Free: (888) 828-7387
 Fax: (847) 966-9358

Email: info@thermalcare.com
 Website: www.awsintl.com

Thermal Care is an ISO 9001:2000 certified company

Manufacturer reserves the right to change specifications or design without notice or obligation. Thermal Care is a registered trademark of MFRI, Inc.