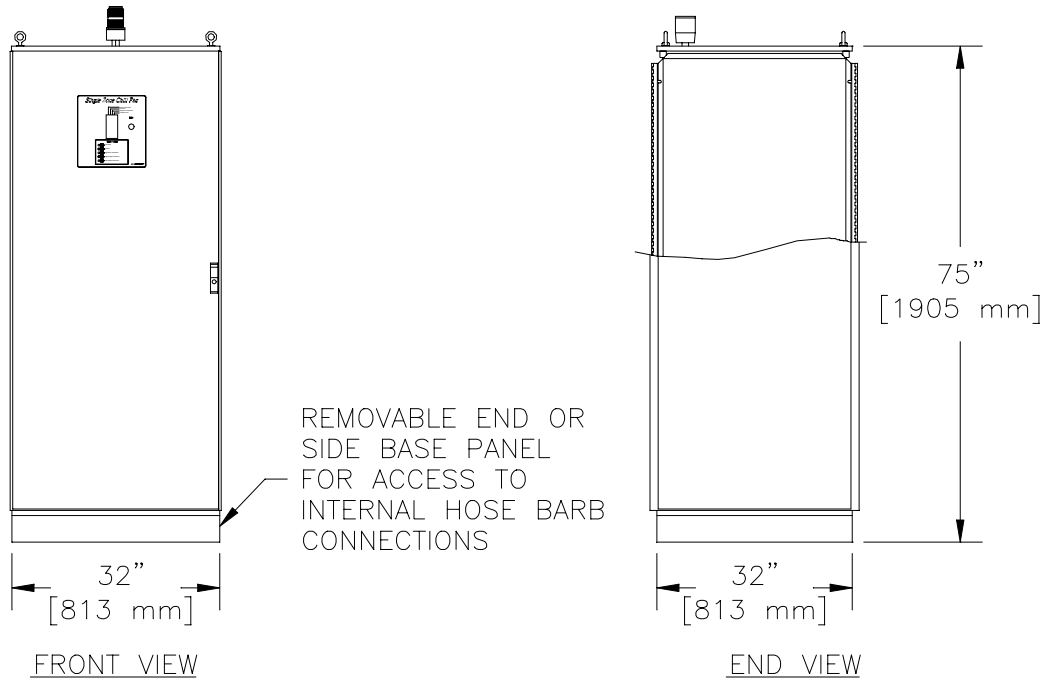




# Single Zone Chill Pac II

SZCPII-3, 5, 7.5, 10, 15

Design and Component Specifications, 460V



Model #	Total Cooling Tons	Chiller/Process Pump HP	FLA @ 460/3/60	SZCPII Shipping Weight Lbs.	Remote Condenser Shipping Weight Lbs.
SZCPII-3	3 (0.85 kW)	3 (2.2 kW)	13.4	1400 (635 kg)	145 (66 kg)
SZCPII-5	5 (1.4 kW)	3 (2.2 kW)	16.5	1500 (680 kg)	220 (100 kg)
SZCPII-7.5	7.5 (2.1 kW)	5 (3.7 kW)	18.0	1600 (726 kg)	295 (134 kg)
SZCPII-10	10 (2.8 kW)	5 (3.7 kW)	24.0	1800 (816 kg)	340 (154 kg)
SZCPII-15	15 (4.3 kW)	10 (7.5 kW)	59.3	2000 (907 kg)	370 (168 kg)

Cooling tons based on 55°F leaving fountain solution with 95°F ambient air.

## Mechanical Features

- Single refrigeration circuit with scroll compressor
- Outdoor air-cooled remote condenser with low ambient controls
- Closed-loop chiller piping with expansion tank
- Cast iron chiller/zone supply pump
- Zone modulating temperature control valve

## Electrical Features

- Microprocessor controller
- Diagnostics lights on front door (system on, freezestat, no flow, high water temperature, high refrigerant pressure, low refrigerant pressure, compressor on)
- Rotary fused disconnect on front door

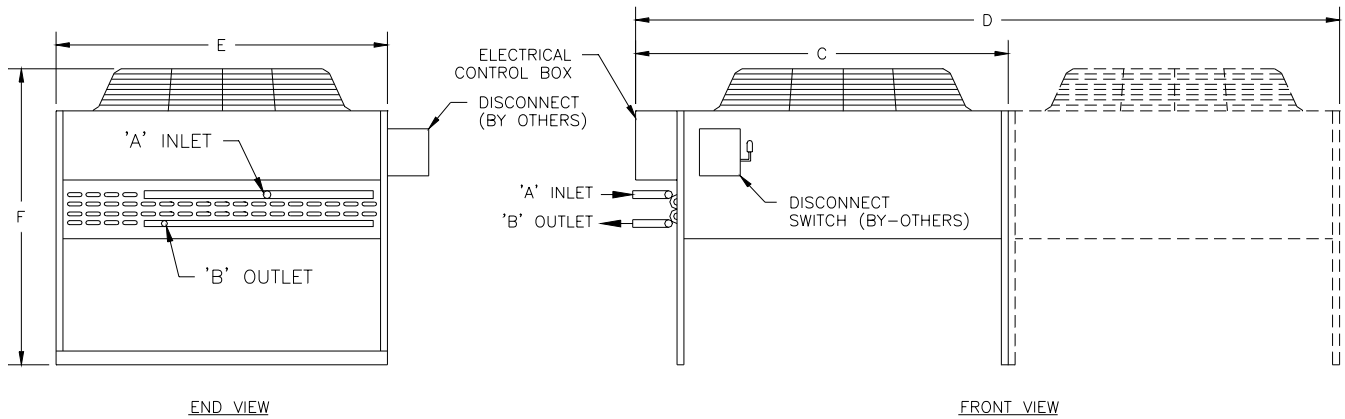
## Warranty

One (1) year parts and labor, excluding expenses

## Connection Sizes

- Makeup (city) water: 0.75" Hose Barb
- Zone Supply & Return: 1.5" Hose Barb
- Discharge Line: 7/8" OD Sweat
- Liquid Line: 5/8" OD Sweat

**Note: Permanent city water connection necessary for fountain makeup and zone loop pressurization. Customer to supply city water to point of connection per local codes (backflow preventer installed by licensed plumber may be required).**



Model #	'A' Inlet	'B' Outlet	'C'	'D'	'E'	'F'	FLA @ 460/3/60	Shipping Weight Lbs.
SZCPII-3	7/8" OD SWT.	7/8" OD SWT.	37.75" (959 mm)	-	30.63" (778 mm)	32.75" (832 mm)	1.3	145 (66 kg)
SZCPII-5	1-1/8" OD SWT.	7/8" OD SWT.	41.25" (1048 mm)	-	48" (1219 mm)	42.75" (1086 mm)	2.3	220 (100 kg)
SZCPII-7.5	1-1/8" OD SWT.	7/8" OD SWT.	41.25" (1048 mm)	-	48" (1219 mm)	42.75" (1086 mm)	2.3	295 (134 kg)
SZCPII-10	1-1/8" OD SWT.	7/8" OD SWT.	-	71.25" (1810 mm)	48" (1219 mm)	42.75" (1086 mm)	4.4	340 (154 kg)
SZCPII-15	1-5/8" OD SWT.	7/8" OD SWT.	-	71.25" (1810 mm)	48" (1219 mm)	42.75" (1086 mm)	4.4	370 (168 kg)

Condenser power comes from SZCPII cabinet. Use condenser FLA for sizing local disconnect.



AWS, a Thermal Care Division  
 7720 North Lehigh Avenue  
 Niles, Illinois 60714-3491  
 Tel: (847) 929-1950  
 Toll Free: (800) 828-7387  
 Fax: (847) 966-9358

Email: [info@awsintl.com](mailto:info@awsintl.com)  
 Website: [www.awsintl.com](http://www.awsintl.com)

Thermal Care is an ISO 9001:2000 certified company

*Manufacturer reserves the right to change specifications or design without notice or obligation. Thermal Care is a registered trademark of MFRI, Inc.*